

# **CSforAll**

## **Support Resources and Grant Overview**

### **AUGUST 15, 2024**



This material is based upon work supported by the National Science Foundation Award 2318592. Any opinions, findings, conclusions, or recommendations expressed in this material are those of the author(s) and do not necessarily reflect the views of the National Science Foundation.



**Elizabeth Tobias**  
Project Director,  
CSforALL Support



**Anna Suarez**  
President &  
Owner



**Hannah Schwarze**  
Research  
Coordinator

**TRIVIUM CONSULTING PRESENTERS**

## **GOAL**

---

To provide group and asynchronous resources in support of **small or medium CSforAll RPP** submissions on the February 2025 deadline.

# **AGENDA**

---

- CSforAll Solicitation Review
- NSF submission Information
- Support Details
- Q&A
- Exit Survey

# **IMPORTANT DATES**

---

- **September 3, 2024** – CSforAll  
Support Survey Due by EOD
- **February 12, 2025** – CSforAll  
Proposal Due by 5PM  
Submitters' Local Time

# **ELIGIBILITY**

---

- **IHEs**
- **Non-Academic Nonprofits**
- **Tribal Governments**

# CSforAll SOLICITATION OVERVIEW

## **CISE**

---

CISE advances research, innovation and education in computer science, information science and computer engineering fields.

## **EDU**

---

EDU works to develop a well-informed citizenry and a diverse and capable workforce of scientists, technicians, engineers, mathematicians and educators.

## **CSforAll SOLICITATION**

---

The CSforAll solicitation is an established grant program with annual recurring deadlines from the NSF Directorate for STEM Education (EDU) and the Directorate for Computer and Information Science and Engineering (CISE)

## **RESEARCH and ~~RPPS~~**

CSforAll: Research and RPPs provide all US students with the opportunity to participate in Computer Science (CS) and Computational Thinking (CT) education in their schools.

# CSforAll

---

## STRANDS AND PROPOSAL SIZE CLASSES

Trivium's resources are most applicable to PK-8, HS, or Pathways strands at the Small and Medium Levels.

### STRANDS

- PreK-8
- High School
- PreK-14 Pathways
- Research

### PROPOSAL SIZE CLASSES

- Small
- Medium
- Large
- Research





# CSforAll

## STRANDS

### Pre K-8: RPP

Design, develop, pilot materials that integrate CS/CT into PK-8 classroom

### High School: RPP

Preparing and supporting teachers to teach rigorous CS curriculum

### PreK-12 Pathways: RPP

Supporting Districts to incorporate CS/CT pathways PK-12 and into higher ed and/or workforce.

### RESEARCH

Building high-level knowledge in the field

**All Project Strands Must Address Underrepresentation**

# CSforAll

## SIZE CLASSES AND FUNDING LEVELS

Trivium's resources are most applicable for PK-8, HS, or Pathways strands at the Small and Medium Levels.

### Small RPP

**\$300K; 3 yrs; 12-13 awards**

Initial steps to build a strong and well-integrated RPP - build and/or establish partnership, exploration of research, piloting implementation

### Large RPP

**\$2M; 4 yrs; 3 awards**

Significant scaling of an evidence-based approach and implementation studies by an established RPP team that has demonstrated sustainability

### Medium RPP

**\$1M; 3 yrs; 6 awards**

Support promising approaches and feasibility studies by a well-defined RPP

### RESEARCH

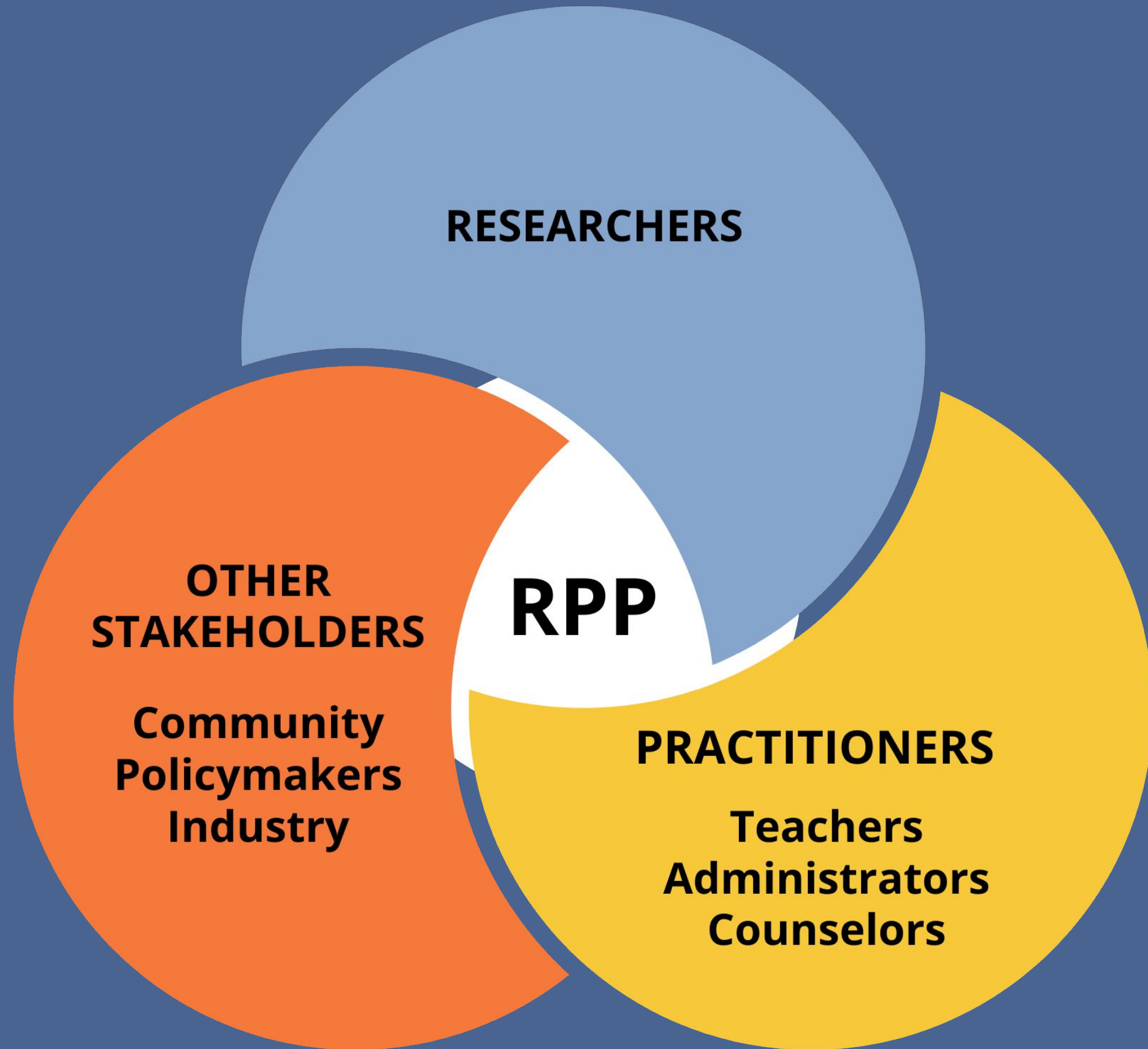
**\$750K; 3 yrs; 4-5 awards**

Distinct in that the Research strand has one award level only

# CSforALL

---

RESEARCHER  
PRACTITIONER  
PARTNERSHIP (RPP)



[CSforALL.org](http://CSforALL.org)

<http://researchandpractice.org/csforall>

<https://journals.sagepub.com/doi/10.3102/0013189X16631750>

# CSforALL

---

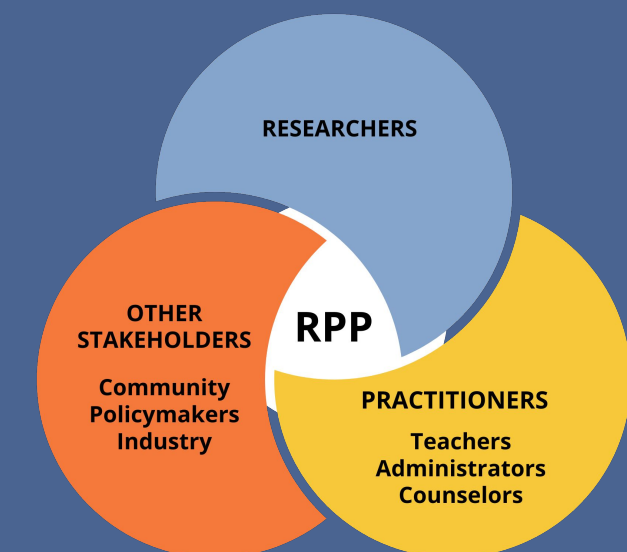
## RESOURCES

<http://www.carnegiefoundation.org/>

<http://rpp.wtgrantfoundation.org/>

<http://researchandpractice.org/>

<http://learndbir.org/>



# **NSF MERIT REVIEW CRITERIA**

---

## **INTELLECTUAL MERIT & BROADER IMPACTS**

### **Intellectual Merit**

How does your project advance the field?

### **Broader Impacts**

What potential does your project have to impact society?

# **SOLICITATION N SPECIFIC CRITERIA**

---

## **BROADENING PARTICIPATION IN COMPUTING**

This program solicitation is particularly interested in Broadening Participation in Computing (BPC) to support the full spectrum of diverse computing talent, including groups that have been traditionally underrepresented or under-served in computing.

1. Does the proposal identify the characteristics and needs of the intended populations to be served?
2. Does the proposal include specific plans or strategies for addressing or accommodating the particular needs of participants of the intended populations?

**Proposals that do not adequately address these additional criteria will be declined.**

# **WHERE TO SUBMIT**

---

**MAKE SURE YOUR ORGANIZATION IS REGISTERED WITH  
SAM.GOV**

**Research.gov**

**Grants.gov**

# WHAT TO SUBMIT

---

## PROPOSAL COMPONENTS

- **Cover Page**
- **Project Summary**
- **Project Description**
- **References Cited**
- **FEOR**
- **Data Management Plan**
- **Post doctoral/Graduate Mentoring Plan**
- **Budget/Budget Justification**
- **Letters of Collaboration**
- **Biosketches (SciENCv)**
- **Synergistic Activities**
- **Current and Pending (SciENCv)**
- **Collaborators and Other Affiliations**
- **List of project personnel**

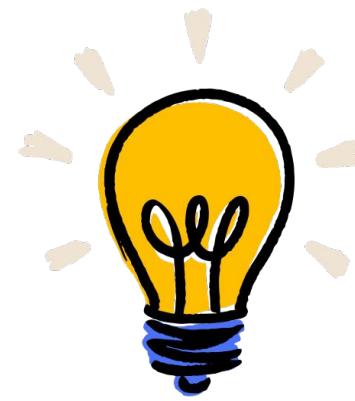


# **TRIVIUM RESOURCES**

---

## [CSforAll | Trivium Consulting](#)

The CSforAll page on Trivium's website includes artifacts and resources to support:



**Ideation & Planning**



**Supplementary Documents**



**NSF Resources**



**Budget**



**FAQ**

# TRIVIUM SUPPORTS

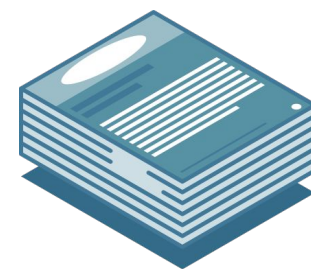
---

Resources permitting, Trivium may be able to provide assistance with:



## Resubmission

- Review panel comments
- Prioritize and address



## Project Description

- Feedback
- Editing

# DO YOU HAVE QUESTIONS?

---

Please post your questions in the  
Q&A Box



## **NEXT STEPS**

---



Please share the status of your project/idea and the supports you believe will best serve your efforts you can link to the survey here - or use the QR code.

**[Webinar Exit Survey](#)**

**Complete by September 3, 2024**

# THANK YOU

## Communication

[CSforAllSupport@TriviumConsulting.com](mailto:CSforAllSupport@TriviumConsulting.com)

## Resources

[CSforAll | Trivium Consulting](#)



This material is based upon work supported by the National Science Foundation Award 2318592. Any opinions, findings, conclusions, or recommendations expressed in this material are those of the author(s) and do not necessarily reflect the views of the National Science Foundation.